

WESTBRIDGE RENEWABLE

ENERGY CORPORATION

Switzerville Open House

August 25, 2025

BEST⁵⁰
OTCQX
2024

VENTURE
50
2024

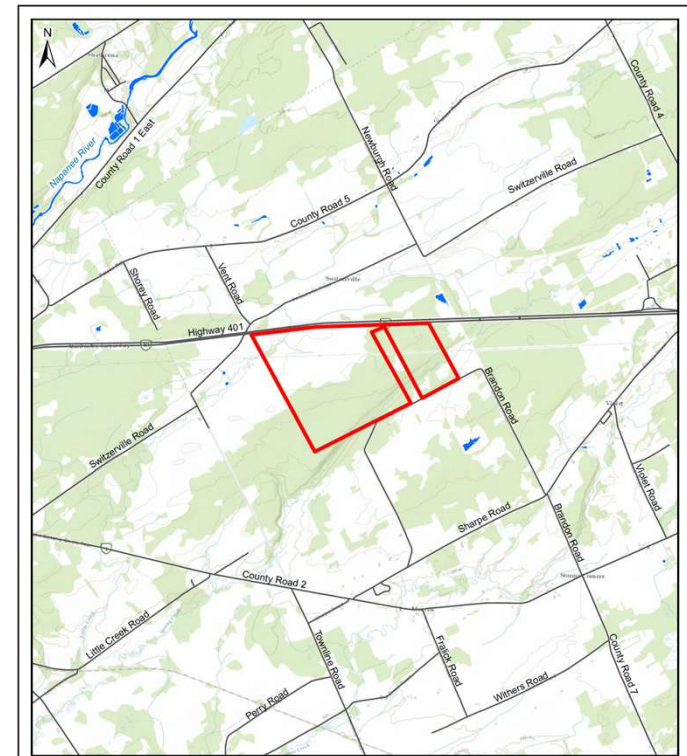
www.westbridge.energy

TSXV: WEB
FRA: PUQ
OTCQX: WEGYF

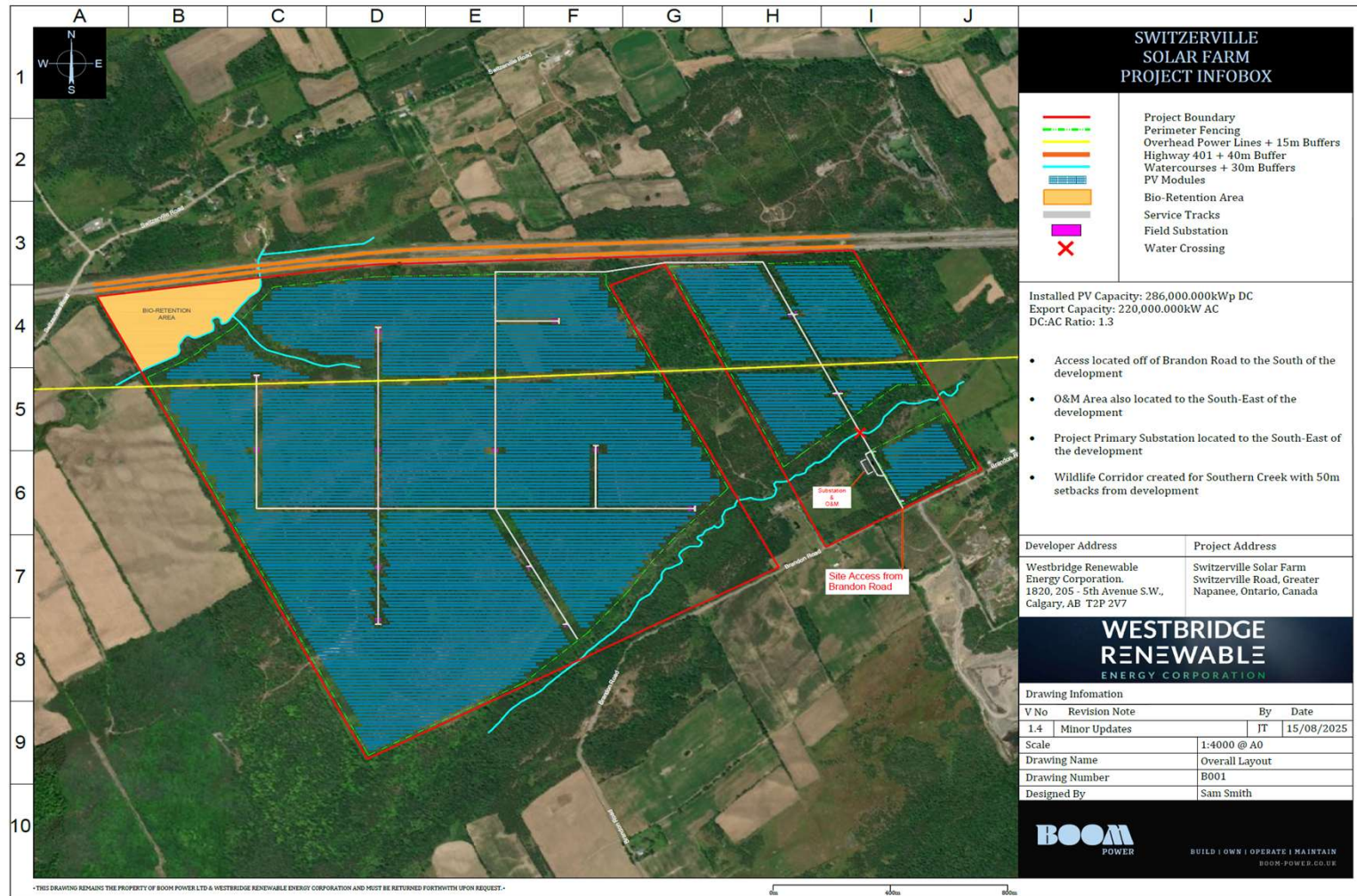


Project Overview

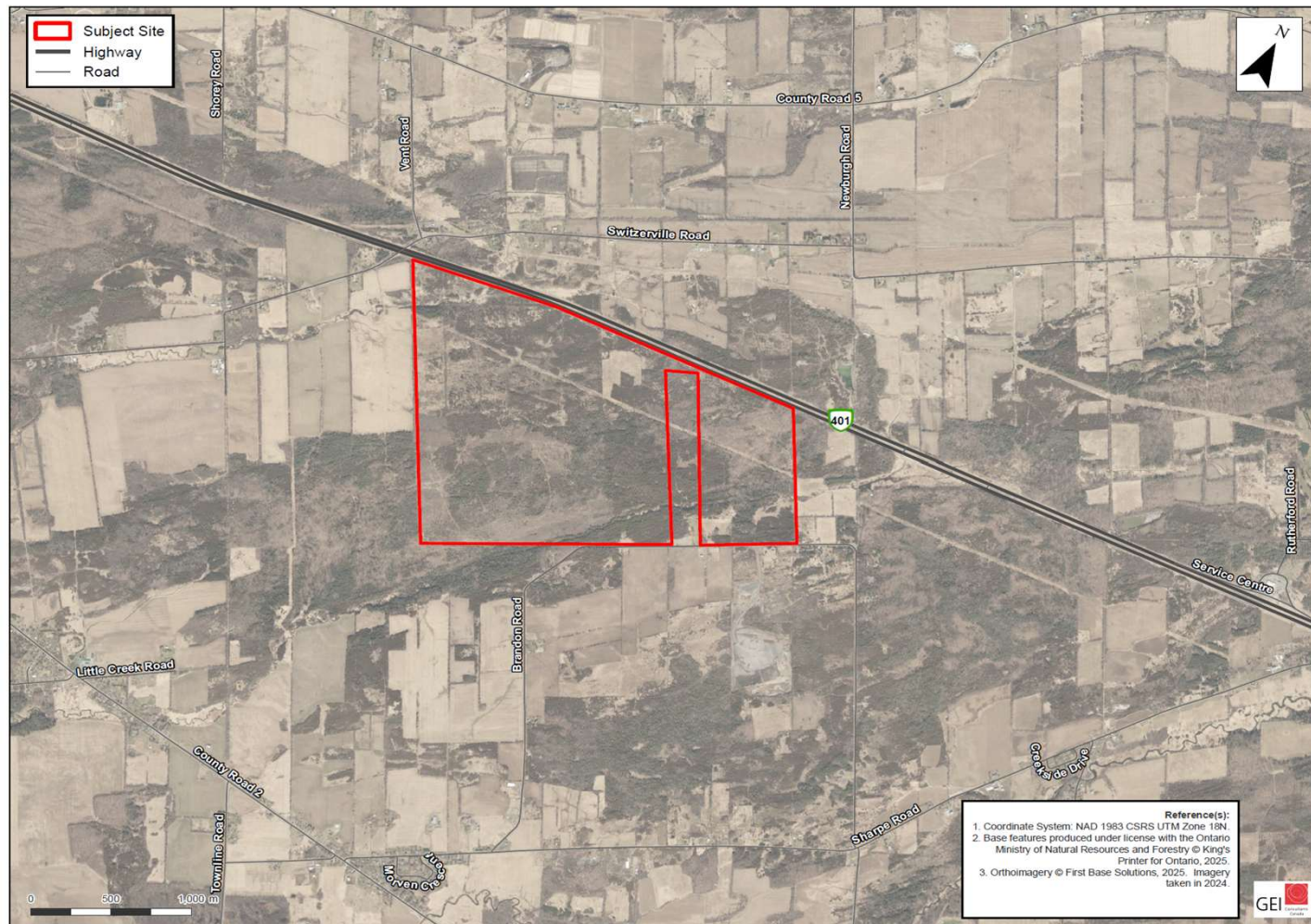
- Solar photovoltaic (PV) capacity of 220 MW
- Located on approx. 800 acres of private land
- The Project area is designated as Rural Area by Loyalist Township
- Components include photovoltaic (PV) solar panels, inverters, substation, access roads
- Project proposal will be submitted through first window of IESO LT2(e) RFP
- Target Operation: May 2030



Project Design



Project Map





Site Selection Criteria

- Existing Transmission Infrastructure
- Land Characteristics
- Current Land Use & Zoning
- Solar Irradiance

Environmental & Permitting Process

Typical REA Requirements

Studies & Assessments



Natural Heritage & EIS



Water Assessment



Archaeological Assessment



Noise Study Report

Project Planning Reports



Construction Plan Report



Design & Operations Report



Decommissioning Plan Report

Community Engagement



Consultation Report

Approvals & Oversight

- If awarded a contract, Switzerville Solar will complete comprehensive environmental and technical studies.
- These studies form part of Ontario's Renewable Energy Approval (REA) process, overseen by the Ministry of the Environment, Conservation & Parks under the Environmental Protection Act.
- The Project will also require additional federal, provincial, and municipal approvals and permits.

Community Benefits

- **Quiet, Passive Operation** – preserving rural tranquility
- **Local Jobs & Training** – supporting employment opportunities
- **Municipal Revenue & Taxes** – funding community services
- **Indirect Economic Benefits** – supporting local businesses
- **Community Contributions** – supporting local initiatives
- **Education & Engagement** – learning opportunities for all ages
- **Clean, Renewable Energy** – reducing emissions and promoting sustainability



Common Questions & Concerns

Will this affect property values?

Studies in Ontario and elsewhere show no consistent negative impact on property values from solar projects. The quiet, passive nature of the facility means minimal disturbance.

What about wildlife and the environment?

A wildlife corridor will be preserved, and environmental studies (water, heritage, noise, habitat) are required to protect local ecosystems.

What will it look like?

Panels will be low to the ground and may be screened by vegetation buffers along certain roadsides to reduce visual impact.

Will there be noise from the project?

During operation, panels are silent. Inverters and transformers produce a low hum, but noise studies will ensure compliance within provincial standards so as not to audible beyond the site boundary.

Will solar panels contaminate the soil?

No. The panels used are made of non-toxic, sealed materials that do not leach into the soil or groundwater. The project does not introduce hazardous substances to the land, and all equipment must meet strict environmental safety standards set by provincial and federal regulators.

Will the project affect the peace and tranquility of the area?

No. Solar facilities are quiet, passive operations during the operational life and have little to no increase in traffic or environmental impacts compared to other forms of development.

What happens at the end of the project?

At the end of the life of the project all equipment will be removed and the land restored.

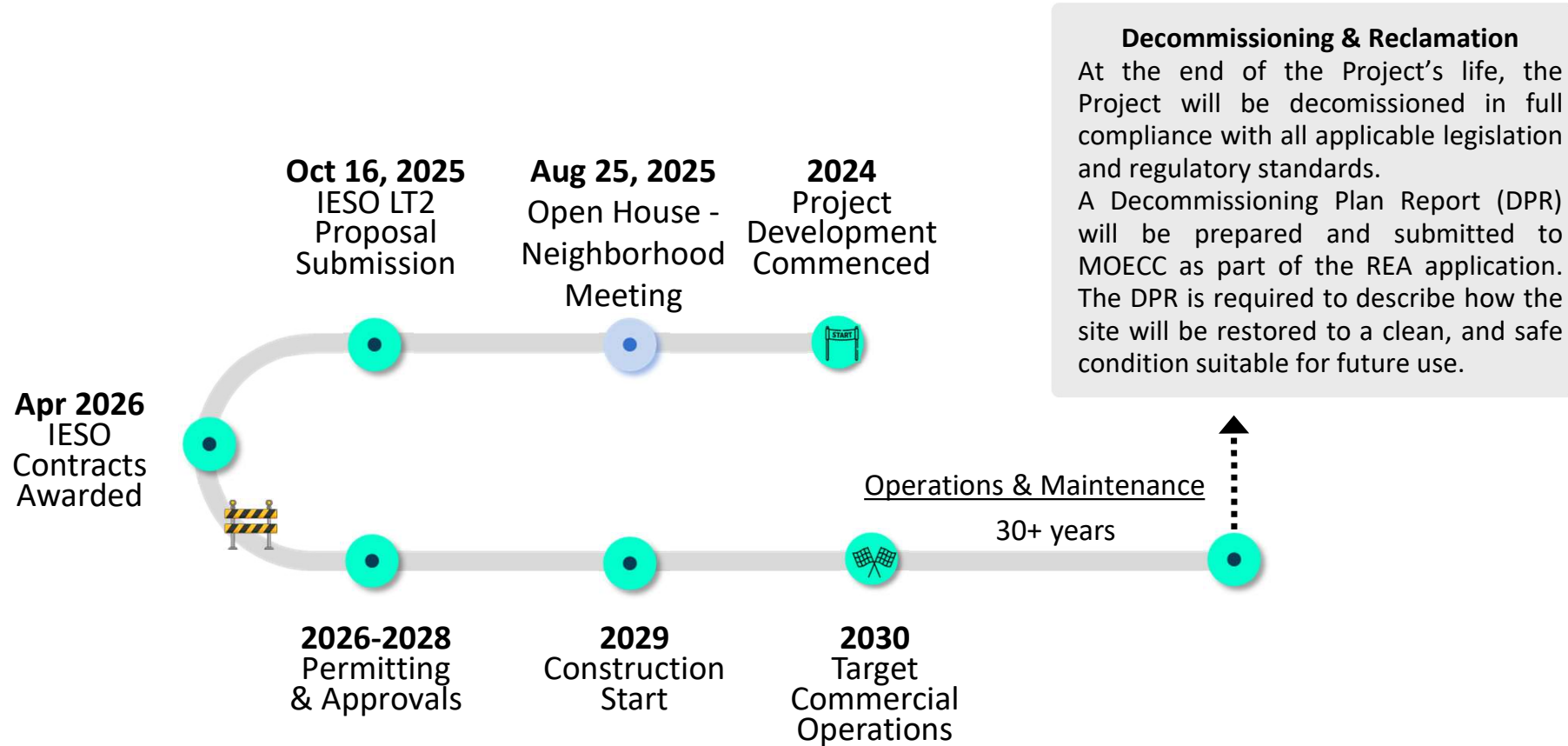
Contact Information

Email: switzerville@westbridge.energy

Phone: 647-556-6326

Website: www.switzervillesolar.com

Project Timeline & Next Steps



Meeting Ontario's Future Electricity Needs

Growing Demand

- The IESO forecasts electricity demand in Ontario will grow 75% by 2050.

Long-Term Procurement (LT2)

- IESO launched LT2 RFPs to secure reliable, cost-effective electricity.

Switzerville Solar Project

- Proposed to respond to this competitive LT2 process.
- Target submission: Oct 2025 (Window 1)
- Contracts awarded: Apr 2026



WESTBRIDGE RENEWABLE

ENERGY CORPORATION

Thank you for visiting! We're
happy to answer any questions.

SCOTT KELLY

Director & Executive Chair
skelly@westbridge.energy

MARGARET MCKENNA

Director & COO
mmckenna@westbridge.energy

Contact Us

switzerville@westbridge.energy

www.westbridge.energy

TSXV: **WEB**
FRA: **PUQ**
OTCQX: **WEGYF**